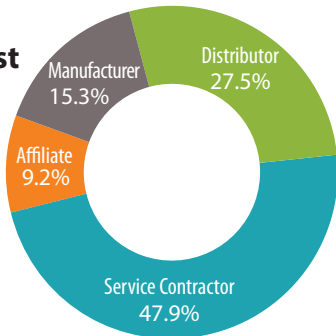


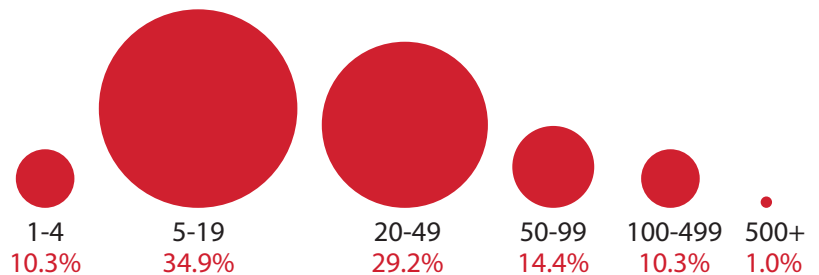
COVID-19 Impact and Implementation Survey

Tables and data below are based on 196 PEI member company responses to an online questionnaire developed by Industry Insights (www.industryinsights.com), an independent research organization. The PEI results are part of a larger survey of 2,762 manufacturers, distributors and other businesses across a diverse group of industries. All responses were collected from March 16-18, 2020.

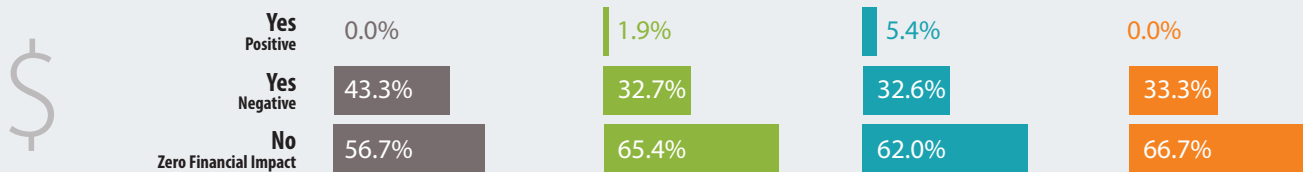
Which of the following best describes your company?



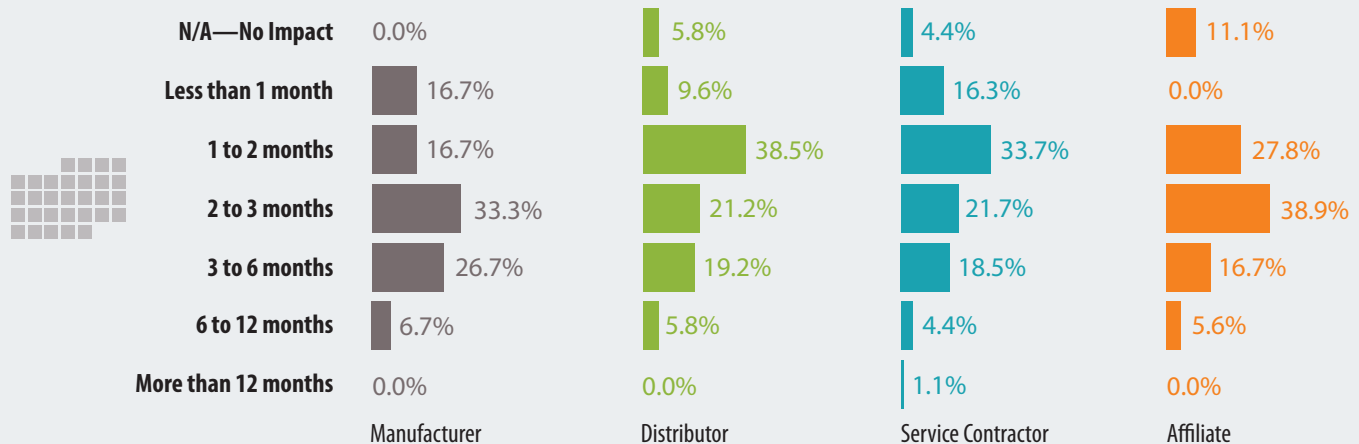
How many employees work for your company?



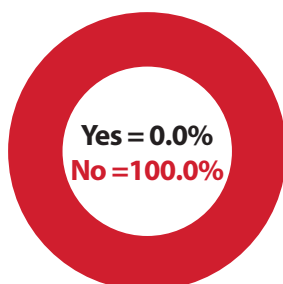
Has your company already experienced a direct financial impact from the coronavirus?



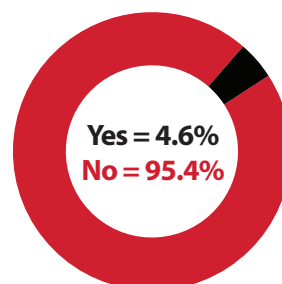
How long do you anticipate the coronavirus will impact your day-to-day operations?

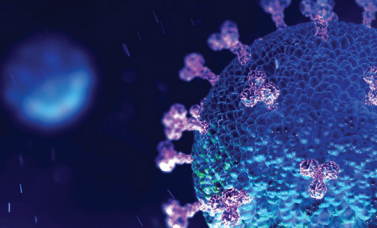


Have any of your employees tested positive for the coronavirus?



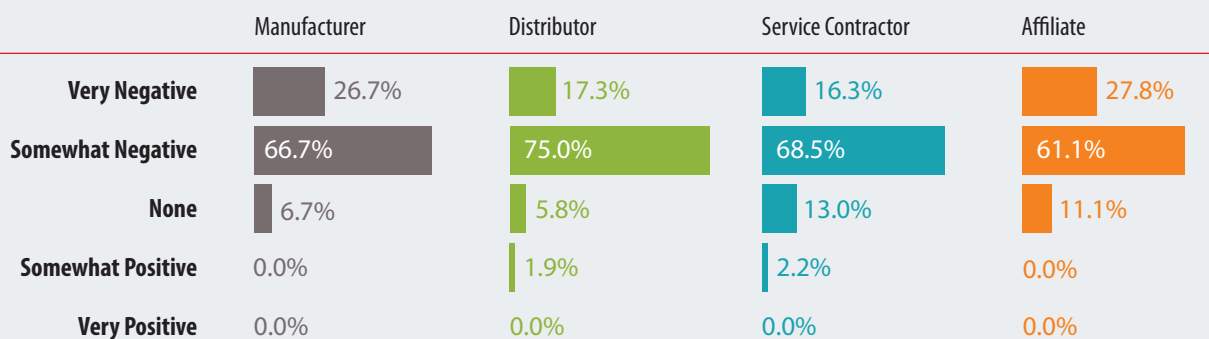
Have any of your employees had known contact with a person confirmed as having the coronavirus?



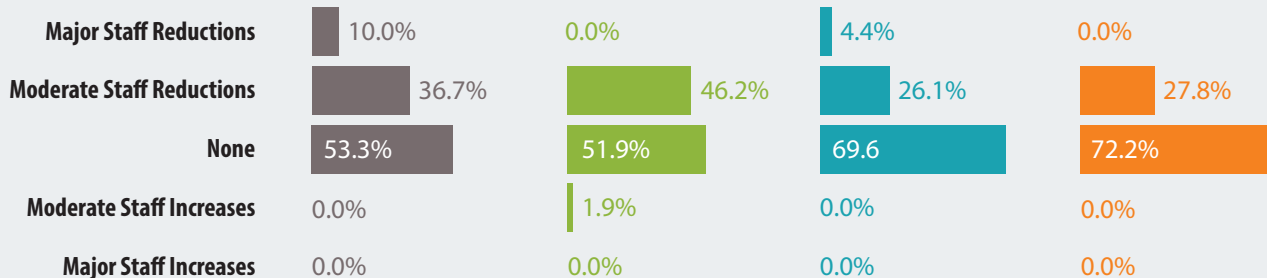


Expected impact in the next year on:

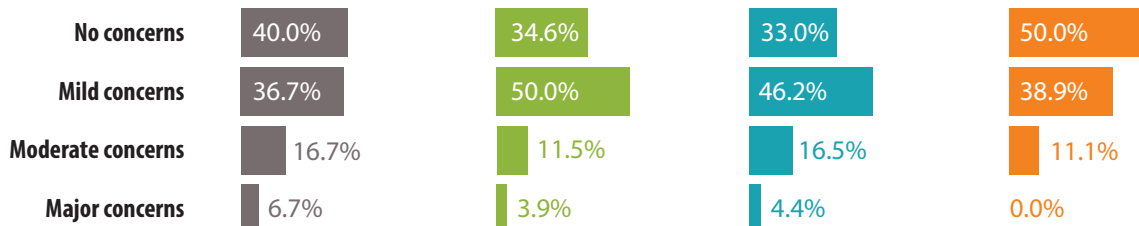
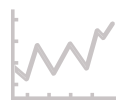
Revenue



Number of Employees

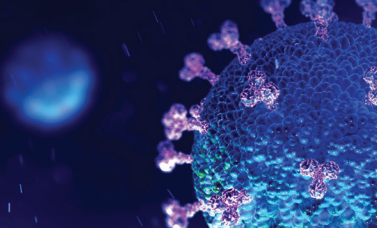


To what extent has the coronavirus raised concerns about the long-term viability of your company?



Have you experienced delays in getting materials/products from suppliers, as a result of the coronavirus?





For which of the following scenarios have you created a formal plan?

Prioritizing customers
26.3%

Major employee absenteeism
21.1%

Extended sick pay
19.0%

Identifying alternative suppliers
13.7%

11.1% Suspending operations

No plan for any of these scenarios
51.6%

Top 15 PEI Member Responses



69.4%
Hand sanitizer (increased availability)



27.0%
Travel ban (domestic)



55.6%
Canceled all large group activities (conferences, events, exhibits, etc.)



24.5%
Travel ban (international)



54.1%
Employee distancing (physical)



10.2%
Employee cross-training in case of extended absences



53.6%
Daily office cleanings/sanitization



10.2%
Staggered work shifts



48.5%
Posted reminders about proper hygiene



8.0%
Work from home (partial mandate—some necessary personnel will remain on-site)



45.4%
Flexible work scheduling



4.1%
Work from home (full mandate—all employees)



29.1%
Eliminating visitors to office



1.5%
Full office shutdown



27.6%
Canceled all in-person meetings